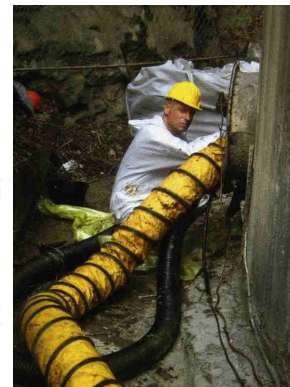

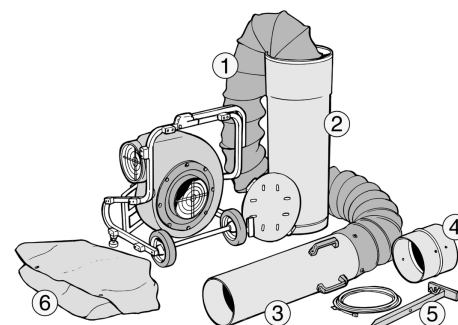


Gebläse / Sauger

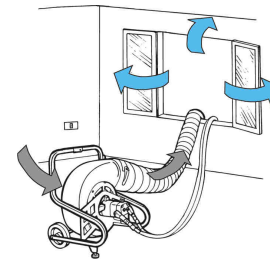
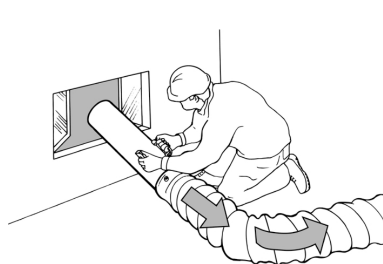
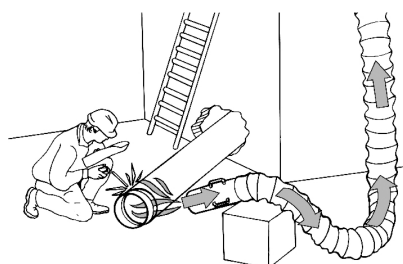
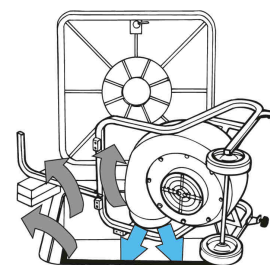
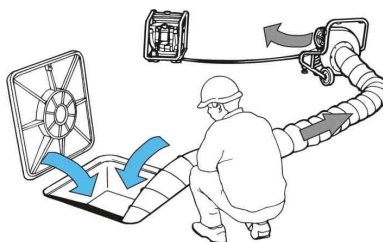
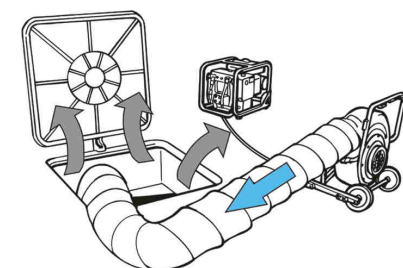
- o Zum Be- und Entlüften von Schächten und Baugruben
- o Kann zum Ansaugen oder Blasen verwendet werden
- o ATEX-Version zum Arbeiten in explosionsgefährdeten Bereichen



Typ	Kapazität	Luftaustritt	Antrieb	Abmessungen	Gewicht
AV-28-H	2000 m ³ /Std.	200 mm	20-40 L/min. @ 140 bar	70x60x50 cm	25 kg
AV-28-E	1800 m ³ /Std.	200 mm	1,2 kW-230 Volt E-Motor	70x60x50 cm	25 kg
 AV-29-E-ATEX	3000 m ³ /Std.	200 mm	230 Volt E-Motor		45 kg
AV-28-G	1800 m ³ /Std.	200 mm	3 PS Benzinmotor	70x60x50 cm	25 kg



Typ	Zubehör
D-A-671067-00	8 Meter Luftschlauch mit Ösen zum schnellen Befestigen am Gebläse
D-A-671002-00	Kunststoffbehälter zur Aufbewahrung des Luftschlauches
D-A-671068-00	Kunststoffrohrendstück zum genauen Ausrichten des Luftstrahles
D-A-671069-00	Adapter um zwei Schläuche miteinander zu verbinden



Technische Änderungen bleiben vorbehalten.

Druck 27. Juni 2016

VENTILATORS/ASPIRATORS COMPLETE RANGE

We have a complete range of ventilators/aspirators powerful, effective and easy transportable, their use of ventilation and safety in closed space is mandatory and prescribed by law before, during and after works in environment that can be dangerous, toxic, flammable or explosive like tunnels, basements, manholes, silos, holds, tanks, petrochemical plants, wells, fuel stations, warehouses, mines, laboratories, confined space excavations, sewers ducts, gas distribution networks etc.

The anti explosion proof model AV29 ATEX is irreplaceable when is needed to operate in presence of gas and vapours explosive or flammable.

Extremely light can be used in different positions or used with or without the flexible air hose. The air hoses are necessary to direct, transport and suction of the air IN or FROM a precise point, without the hoses can be used just like positive ventilators to supply a powerful direct "wall of air".

The exclusive DOA system to fix the hoses on tools allows a quick installation on the mouth by simply "button up" the hose edge on pins only by hands without needing screw drivers or belts/clamp.

The volute and air fan can be washed up without problems as are in polyetilene, maintenance necessity is minimal. Very robust thanks to the construction in polyetilene and stainless steel are invulnerable to impacts rust water and from the corrosion of the majority of acids and chemical agents.

Powerful and easy transportable its use is mandatory by law for putting in safety conditions an ambient before and during operations in closed environment that could be dangerous or explosive like tunnels, basements, manholes, silos, large tanks, holds, wells, petrochemical plants, gas stations, mines, laboratories, narrow trenches, sewers

ducts, gas distribution networks, etc...

Extremely light can be inclined and used in more positions (hydraulic and electric version), can be used with or without the flexible hose, flexible hoses are needed when the air has to be transported IN or FROM a precise point, without hoses can be used as positive ventilator blower to make a powerful and direct "air wall".

The volute and impeller are in robust polyetilene and polypropylene materials invulnerable to water, rust and corrosion, the frame is in indestructible stainless steel

AV28 H WITH HYDRAULIC MOTOR

Practical centrifugal ventilator / aspirator with hydraulic motor.

AV28 E WITH ELECTRIC MOTOR

Practical centrifugal ventilator / aspirator with 230 V electric motor.

AV28 S WITH THERMIC ENGINE

Practical centrifugal ventilator / aspirator with gasoline engine.

AV29 WITH ATEX ELECTRIC MOTOR

Practical centrifugal ventilator / aspirator with 230 V electric motor **ATEX** certified Cat. II – 2G – IIC – c – T4

The flexible air hoses must be only ANTISTATIC type that guarantee an absolute absence of spark. The volute and impeller are in robust polyetilene and polypropylene materials invulnerable to water, rust and corrosion, the frame is in indestructible stainless steel. Can be power only by a ATEX certify electric socket.

