

Pressköpfe, doppelwirkend

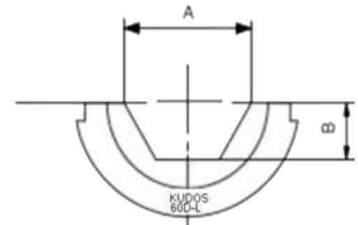
- o Zum Anschluss an Hydraulikpumpen für doppelwirkende Werkzeuge
- o Max. Arbeitsdruck 700 bar (10.000 PSI)



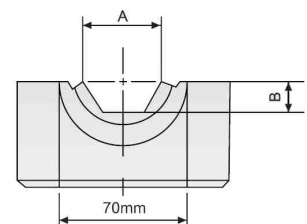
Typ	Kraft	Hub	Ölbedarf	Pressbereich Max.	Einsätze Serie	Abmessungen	Gewicht
P-600-D	600 kN	37,6 mm	308 cc	D=60mm	"600DW"	146x450(H)mm	28 kg
P-1000-D	1000 kN	22 mm	314 cc	D=75mm	"1000DW"	200x350(H)mm	32 kg
P-2000-D	2000 kN	40 mm	1134cc	D= 90mm	"2000DW"	270x415(H)mm	84 kg

Presseinsätze

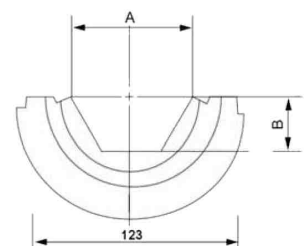
Serie 600DW

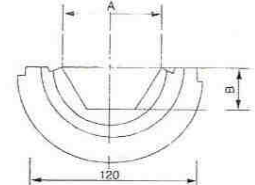
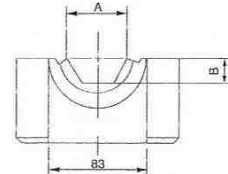
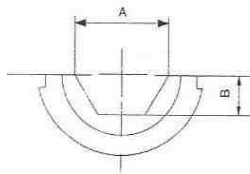


Serie 1000DW



Serie 2000DW




For Copper Lugs

DIE NO.	A	B	C(100/200)
C14	14	6.1	60-
C17	17	7.4	60-
C19	19	8.2	60-
C23	23	10	60-
C26	26	11.3	60-
C29	29	12.6	60-
C32	32	13.9	60-
C36	36	15.6	55-
C38	38	16.5	55-
C42	42	18.2	55-
C47	47	20.4	50-
C50	50	21.7	50-
C51	51	22	50-
C54	54	23.4	50-
C56	56	24.3	40-
C57	57	24.7	40-
C63	63	27.3	-70
C64	64	27.7	35-
C68	68	29.4	-70
C73	73	31.6	-65
C78	78	33.8	-64
C85	85	36.8	-60
C86	86	37.23	-60

For Copper Lugs

DIE NO.	A	B	C
10SH	15.9	6.9	32
12SH	19.3	8.4	23.9
14SH	22.2	9.5	25.4
16SH	25.4	10.9	16.8
18SH	28.6	12.3	15.2
20SH	31.4	13.4	19
75SH	10.7	4.6	35.1
76SH	12.7	5.05	28.4
20AH	31.8	13.5	59.7
24AH	38.1	16.3	49.5
27AH	42.8	18.2	43.2
30AH	47.6	20.2	57
34AH	54	23	46.2
36AH	57.2	24.2	44.5
74AH	20.8	8.7	62
75AH	25.4	10.6	62
76AH	30.2	12.6	61.2

**For Steel Sleeves
C: Die-Width**

DIE NO.	A	B	C(100/200)
S8.5	8.5	3.7	50-
S10	10	4.3	45-
S12	12	5.2	40-
S16	16	6.9	40-
S18	18	7.8	35-
S20	20	8.7	35-
S22	22	9.5	35/70
S23	23	10	30-
S24	24	10.4	30/60
S26	26	11.3	30/60
S28	28	12.1	28/60
S30	30	12.99	25-
S32	32	13.9	25-
S44	44	19.1	-35
S50	50	21.7	-30

**For Aluminum Sleeves
C: Die-Width**

DIE NO.	A	B	C(100/200)
A22	22	9.5	75/128
A26	26	11.3	75/128
A30	30	12.5	75/128
A34	34	14.2	75/128
A38	38	16	75/128
A42	42	18.2	75/128
A44	44	18.6	75/128
A48	48	20.8	75/128
A52	52	22.5	75/128
A60	60	26	75/128
A65	65	28.2	75/128
A68	68	29.4	75/128
A71	71	30.7	75/128
A76	76	32.9	-128
A90	90	39	-128
A100	100	43.3	-128

CONDUCTOR ACSR		ALCAN Die No's			
CODE	DIA mm	ALUM.	A/F mm	STEEL.	A/F mm
WOLF	18.13	A-8	28.2	S-8	12.7
HORSE	13.95	A-9	32.3	S-9	15.2
PANTHER	21.00	A-9	32.3	S-9	15.2
* KEZIAH	19.53	A-9	32.3	S-9	15.2
BEAR	23.45	A-9	32.3	S-10	16.1
LYNX	19.53	A-9	32.3	S-10	16.1
GOAT	25.97	A-10	36.2	S-10	16.1
ZEBRA	28.62	A-11	40.2	S-10	16.1
DINOSAUR	35.56	A-13	49.7	S-12	20.2
CENTIPED	26.49	A-10	36.2	N/A	N/A
BULL	38.00	A-13	49.7	N/A	N/A